

Central District Specific Plan

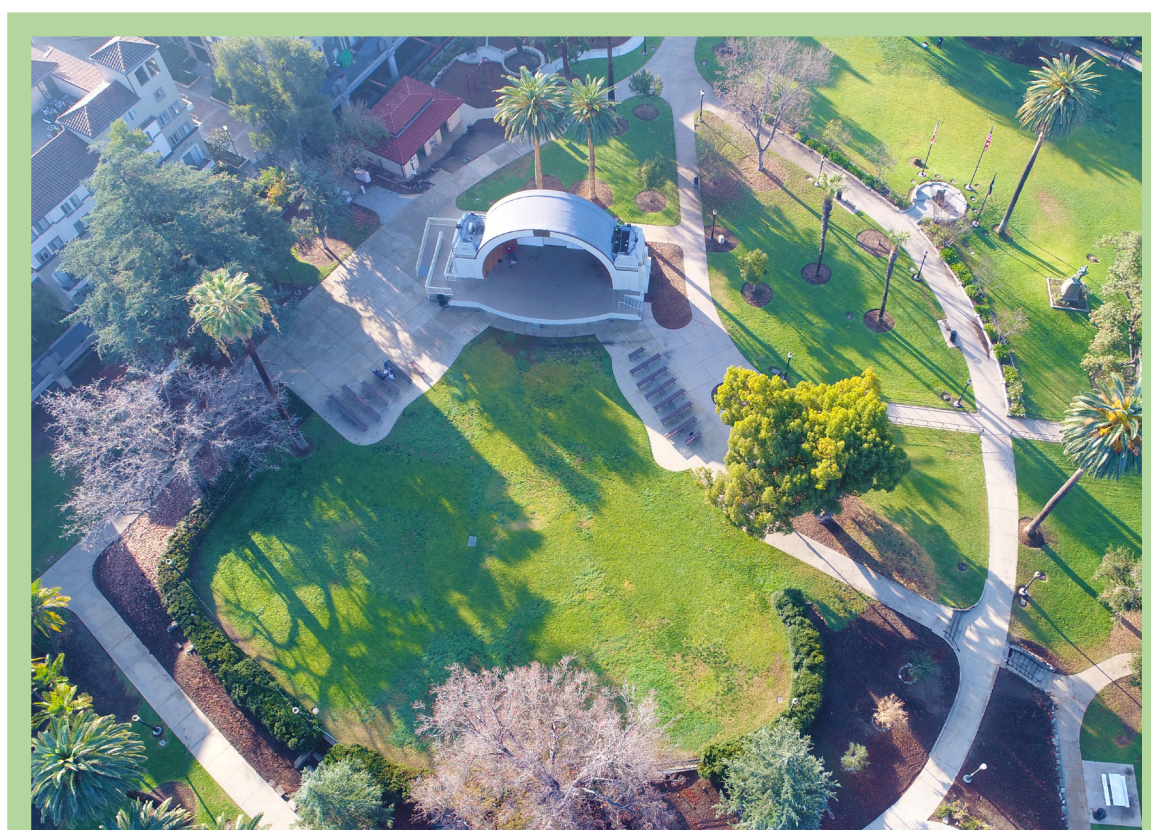
Use Concept

INSTITUTIONAL

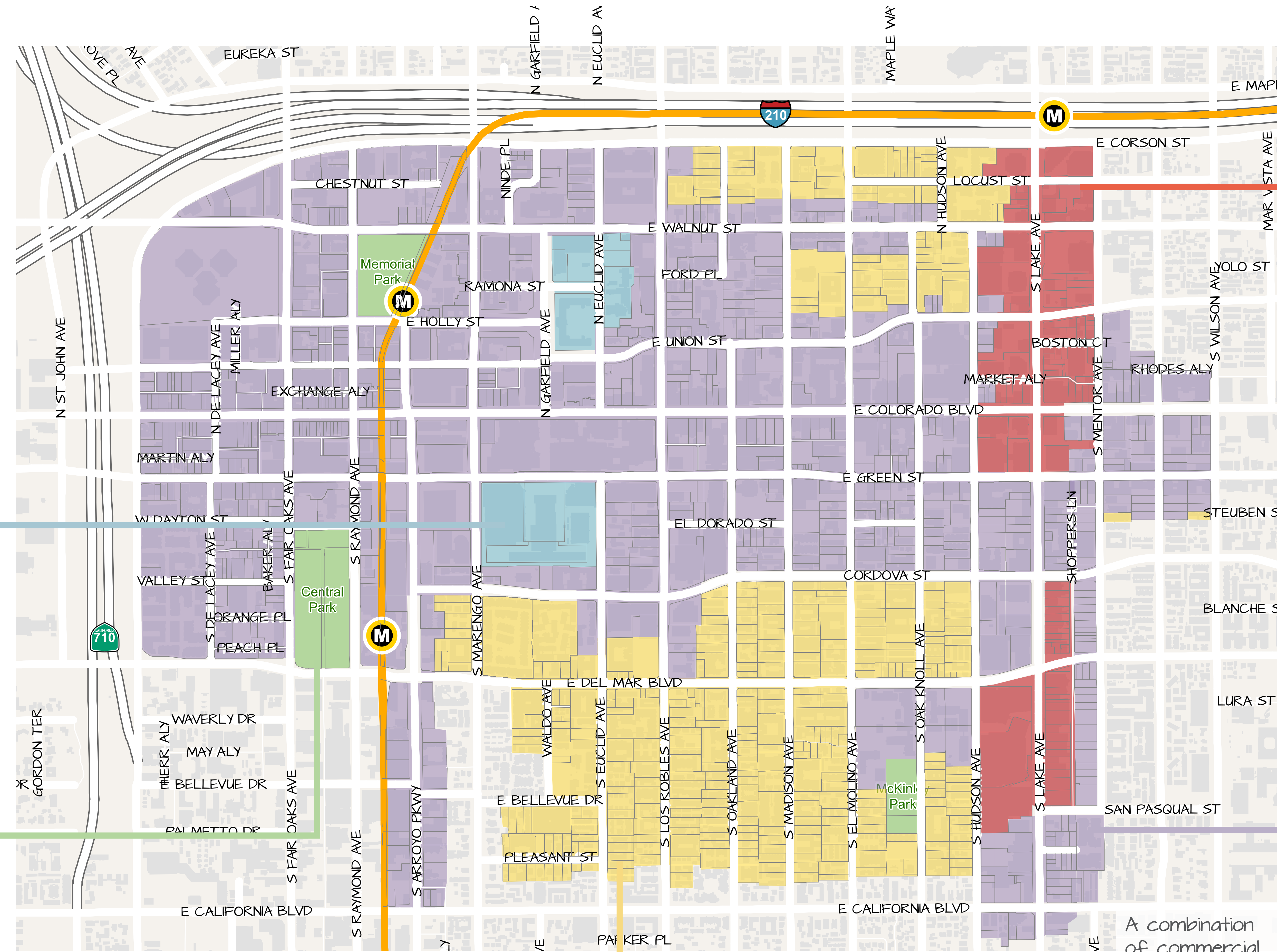


City facilities such as City Hall and the Convention Center.

OPEN SPACE



Parks within the Central District.



RESIDENTIAL



Residential neighborhoods such as the City of Gardens and Locust Street areas.

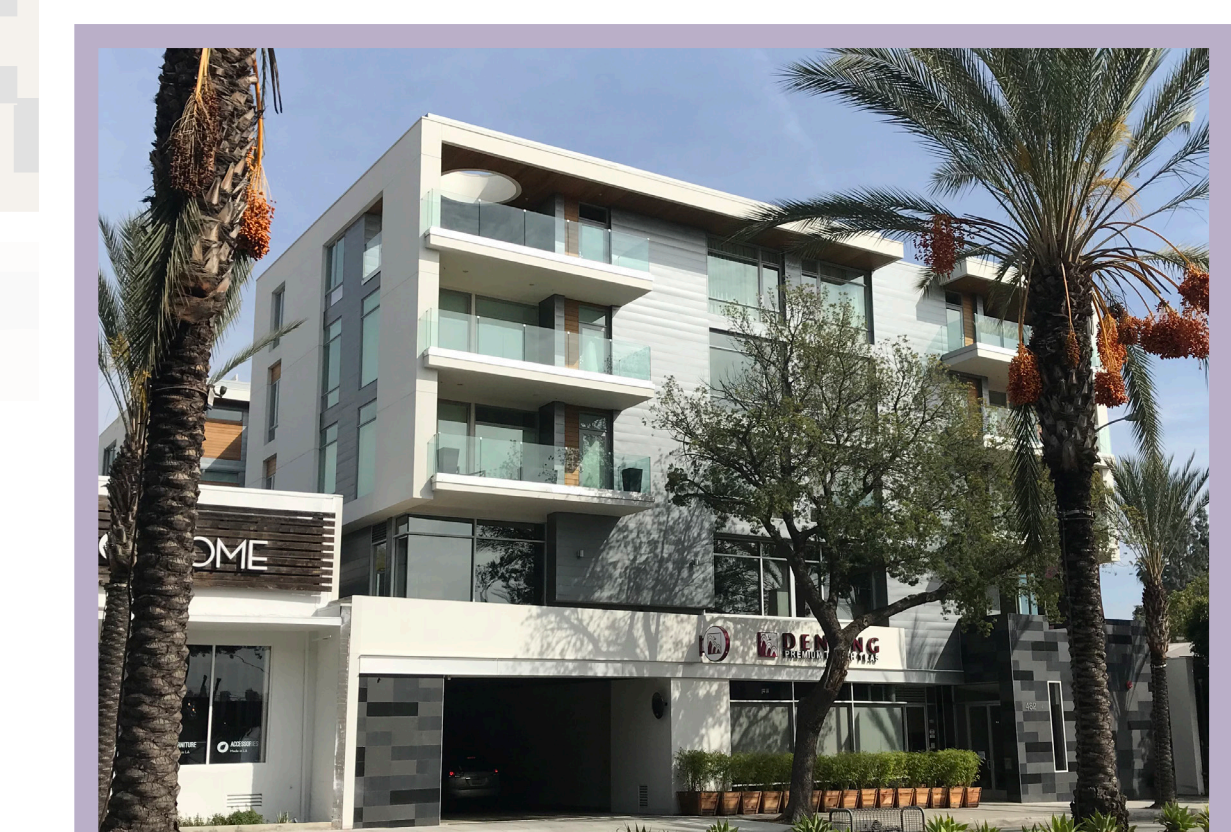
- Residential
- Commercial
- Institutional
- Open Space

COMMERCIAL



Areas for business, employment, and shopping. Residential is prohibited.

MIXED-USE



A combination of commercial, office, residential, or services.

- Institutional
- Open Space