

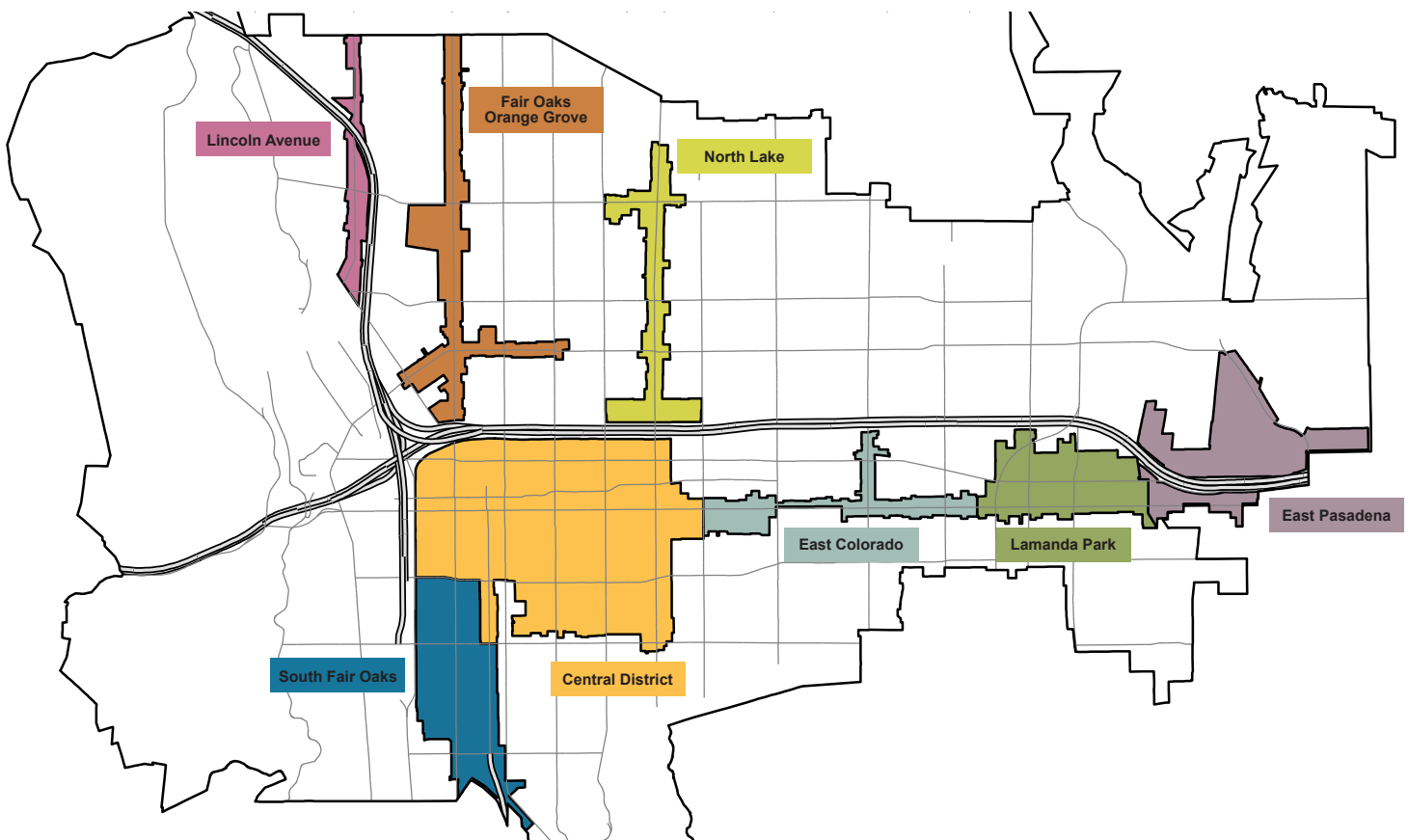
## WHAT IS A SPECIFIC PLAN?

Every jurisdiction in California is required to have a General Plan, a blueprint to guide the future development. The General Plan must include certain mandatory topics, called Elements, but each City may include optional elements that address issues of local importance. The Elements of the General Plan make up the framework for decision-making regarding future development and preservation of resources in the City. A Specific Plan builds on the work of the General Plan and needs to be consistent with its Elements.

Pasadena's General Plan consists of the seven mandatory Elements: Land Use, Mobility, Housing, Green Space, Recreation, and Parks, Open Space and Conservation, Noise, and Safety.

## PURPOSE OF A SPECIFIC PLAN

Each Specific Plan is one of many tools the City uses to implement the General Plan. It serves as a **planning and zoning document** with detailed policies and regulations customized for a **defined geographic area** of the City. Developers, property owners, and City staff use the Specific Plan to make decisions on individual project proposals within the Specific Plan Area.



## SPECIFIC PLAN UPDATES

The City has eight Specific Plans: Central District, East Colorado, East Pasadena, Fair Oaks/Orange Grove, Lincoln Avenue, North Lake, South Fair Oaks, and West Gateway. Except for the West Gateway Specific Plan, the City will update all of its existing plans and create a new one for Lamanda Park.

## HOW THE GENERAL PLAN, SPECIFIC PLANS, AND ZONING CODE WORK TOGETHER

The General Plan has a long-term outlook with broad policies that identify the overall pattern of future development, determining when, where, and what type of new growth and investment may occur. While the General Plan is the City's overall guide to development, a Specific Plan includes tailored development standards and guidelines designed to address the unique needs and characteristics of a defined geographic area. The Zoning Code is the primary tool for executing the General Plan and the Specific Plans, regulating development citywide. It establishes specific rules prescribing or determining the size, shape, use, and placement of buildings, and much more.

## SPECIFIC PLAN UPDATES



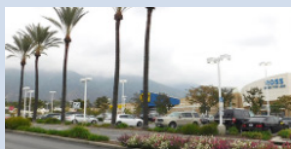
**Central District**



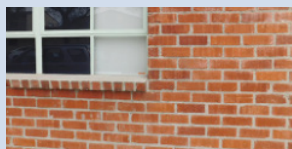
**East Colorado**



**Fair Oaks/  
Orange Grove**



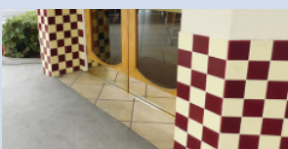
**East Pasadena**



**Lamanda Park**



**Lincoln Avenue**



**North Lake**



**South  
Fair Oaks**

## CONTACT US

For general inquiries:

[ourpasadena@cityofpasadena.net](mailto:ourpasadena@cityofpasadena.net)  
(626) 744-4591

## FOLLOW US FOR UPDATES

 @OurPasadena

 @OurPasadena

 @CityofPasadena